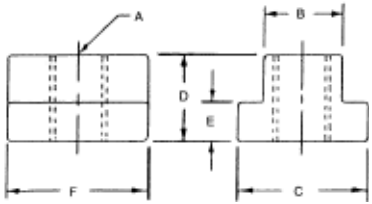


**T-Slot Nuts**

- ▶ Available in case hardened carbon steel with black oxide finish, or 304 stainless steel
- ▶ Imperfect thread at the bottom of the t-nut to prevent damage to machine table
- ▶ Tapped-thru hole available upon request
- ▶ If the size you require is not listed...give us the specifications...we will make it for you.



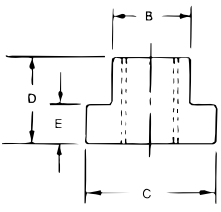
Low Carbon Steel PART #	Stainless Steel PART #	Thread	Table Slot B	C	D	E	F
-	TN-6SS	1/4-20	5/16	1/2	1/4	11/64	9/16
TN-0	TN-0SS	5/16-18	3/8	5/8	13/32	7/32	3/4
TN-00	TN-00SS	5/16-18	7/16	11/16	3/8	1/4	11/16
TN-05	TN-05SS	3/8-16	7/16	3/4	1/2	7/32	1
TN-10	TN-10SS	3/8-16	1/2	7/8	5/8	1/4	7/8
TN-15	TN-15SS	3/8-16	9/16	7/8	5/8	5/16	1-1/4
TN-20	TN-20SS	1/2-13	9/16	7/8	3/4	11/32	1-1/4
TN-1	TN-1SS	1/2-13	9/16	7/8	3/4	5/16	1-1/4
TN-2	TN-2SS	1/2-13	9/16	1-1/8	3/4	25/64	1-1/4
TN-22	TN-22SS	1/2-13	5/8	1	3/4	3/8	1-1/4
TN-23	TN-23SS	1/2-13	5/8	1-1/8	3/4	7/16	1-1/4
TN-21	TN-21SS	1/2-13	11/16	1-1/8	3/4	13/32	1-1/4
TN-30	TN-30SS	5/8-11	11/16	1-1/8	1-1/8	15/32	1-1/2
TN-3	TN-3SS	5/8-11	11/16	1-1/4	1	15/32	1-1/2
TN-31	TN-31SS	5/8-11	13/16	1-1/4	1	17/32	1-1/2
TN-40	TN-40SS	3/4-10	13/16	1-3/8	1-3/8	17/32	1-3/4
TN-5	TN-5SS	3/4-10	13/16	1-1/2	1	9/16	1-3/4
TN-4	TN-4SS	3/4-10	1	1-5/8	1	9/16	1-3/4
TN-41	TN-41SS	3/4-10	1-1/16	1-5/8	1	9/16	1-3/4



- ▶ Case-hardened carbon steel
- ▶ Black oxide finish
- ▶ Imperfect thread to prevent damage to machine table
- ▶ Dimensions shown in millimeters

**T-Slot Nuts**  
metric

PART #	Thread	Table Slot B	C	E	D	Length
TN-110	M8 x 1.25	10 mm	16 mm	6mm	12.7mm	22mm
TN-112	M10 x 1.5	12	22	7	12.7	22
TN-114	M12 x 1.75	14	22	8	16	29
TN-116	M12 x 1.75	16	25.4	9	16	29
TN-118	M16 x 2.0	18	31.7	11	19	32
TN-120	M16 x 2.0	20	31.7	12	25.4	38



- ▶ Carbon steel
- ▶ Case hardened, black oxide finish
- ▶ Unique design allows quick and convenient set-ups and tear down
- ▶ Place the T-Nut into the table slot and rotate a quarter-turn to engage

**Rotary T-Nuts**

PART #	Thread	Table Slot	A	B	C	D
TN-210	3/8-16	1/2	7/8	.495	1/2	9/32
TN-211	1/2-13	9/16	7/8	.557	5/8	11/32
TN-212	1/2-13	5/8	1	.620	5/8	11/32
TN-213	1/2-13	11/16	1-1/8	.682	3/4	7/16
TN-214	5/8-11	11/16	1-1/8	.682	3/4	7/16
TN-215	5/8-11	3/4	1-1/4	.745	3/4	15/32
TN-216	3/4-10	1	1-5/8	.995	1	5/8

